



# Celebrations

SO I HEARD U WANNA  
PARTY LIKE ITS 1999!

Pop Culture Soda Shoppe is available for private events and parties! We offer exclusive use of the shop and packages that include the specialty floats!



# Let's Game!

# PARTY PACKAGE

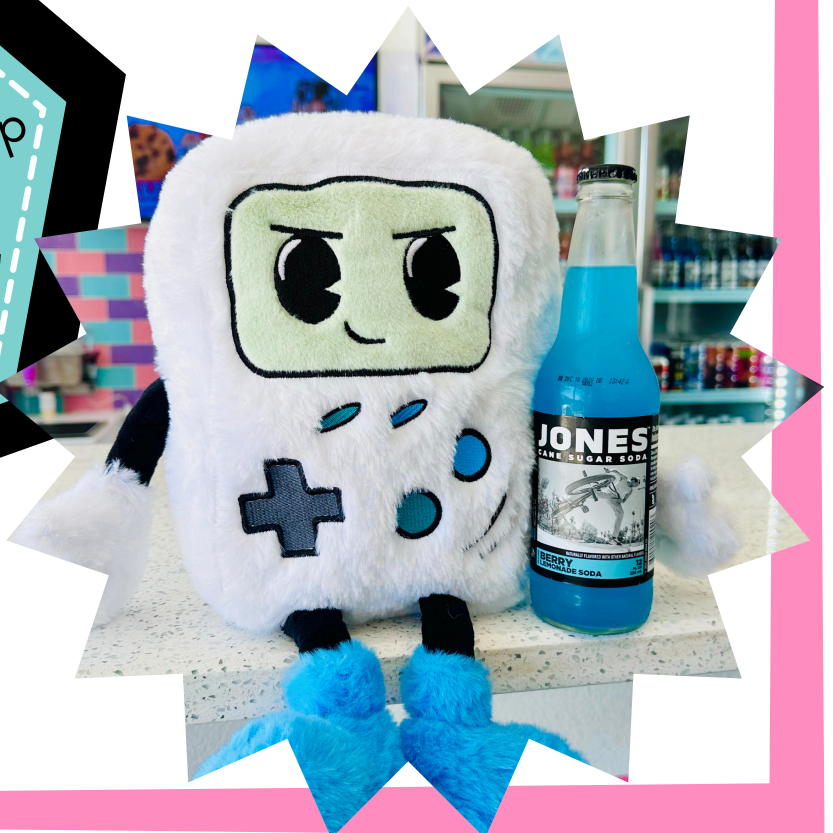
MON/TUES OR WED-SUN AFTER HOURS  
\$100 PER HOUR  
2 HOUR MINIMUM EVENT TIME

- PRIVATE USE OF THE **ENTIRE** STORE!
- MINIMUM 2 HOURS OF EVENT TIME (**EX: SAT 10A-12P OR SUN 5:30P-7:30P**)
- FLOATS AT POP CULTURE WILL NOT BE AVAILABLE FOR PURCHASE UNLESS THEY ARE BOOKED AHEAD OF TIME!
- YOU CAN BRING OUTSIDE FOOD & CAKE

**AVAILABLE  
WEEKEND TIMES:**

Sat 9/10am-12pm  
Sun 5:30p-7:30/8:30p

**MON/TUES**  
open availability





# PARTY PACKAGE ICE CREAM FLOAT ADD ON

- EACH ATTENDEE CAN CHOOSE A REGULAR SIZE FLOAT FROM POP CULTURE SODA SHOPPE.
- DRINKS WILL ALSO BE AVAILABLE FOR PURCHASE IF ATTENDEES WOULD LIKE ADDITIONAL TREATS.

**TREAT YOUR GUESTS TO FLOATS FROM  
POP CULTURE SODA SHOPPE!  
\$7 PER GUEST + TAX + 20% GRATUITY**



# POWER UP Claw Machine!

Pre-purchase tokens for the claw machine  
for your guests to play!  
We recommend 5 tokens per person!



**\$1 PER TOKEN**

# POWER UP

## Custom Themed Float

Name a float after the celebration's guest of honor or theme! Choose from any of our available soda flavors and available topping options to create your own float! Or get special sprinkles to match your party! We will work with you to design an instagram-worthy and delicious float special for your event!



EXAMPLE



OHANA SPECIAL

ADDITIONAL \$35



# PARTY PACKAGE BOOKING INFORMATION

## Reserve your date

- To reserve your date and event time, the full balance is due upon booking.
- Payment can be made in store or online via a customized square invoice that will be emailed to you.
- Party reservations are non-refundable. If you have to change the date of your event, we will work with you to find a new date and transfer the payment to the newly scheduled date and time.

## Frequently Asked Questions

- Can I bring my own food or cake???
  - YES!
- What games do you have in the lounge?
  - On the large TV we have a Nintendo Switch 2 with Mario Kart or Super Smash Bros. You can bring your own switch and controllers if you wanted a different game or more players!
  - On the small TVs we have 2 switch docks for your guests to dock their own switch!
- How many guests can I fit?
  - The store can fit up to 50 guests comfortably but there is only seating for about 15 guests. Small parties are most comfortable!

## Questions?

We can help! Email us at [info@popculturesodashoppe.com](mailto:info@popculturesodashoppe.com)